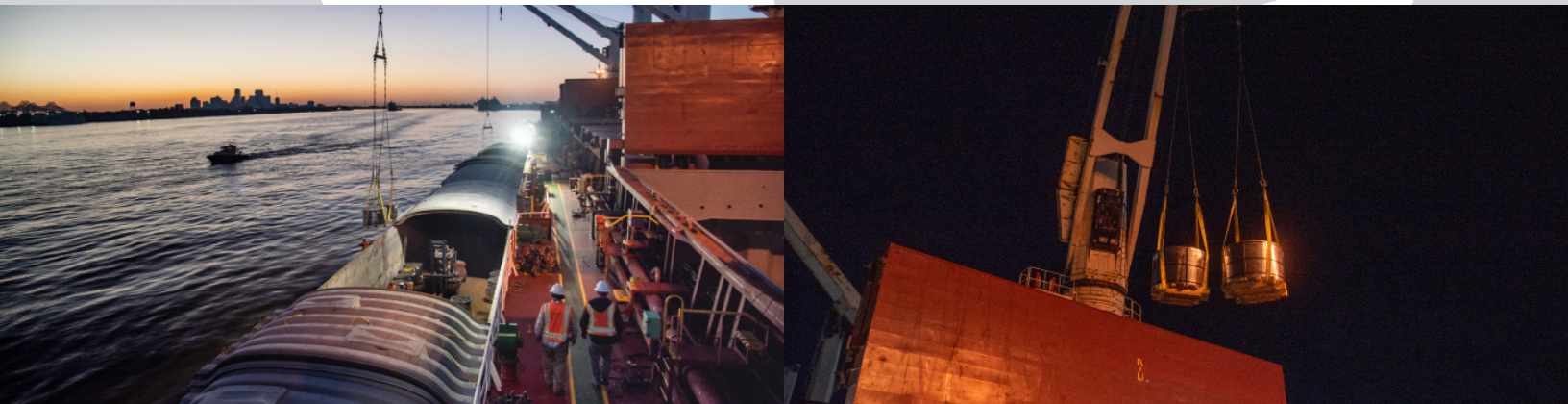


Alabo Street Terminal

NEW ORLEANS, LOUISIANA



The Port of New Orleans is a deepwater port located on the Mississippi river near the U.S. Gulf and offers customers seamless supply chain solutions from river to rail to truck. The Alabo Street Terminal is connected to Class 1 rail and highway systems and serves markets in the southern states and the U.S. Midwest, serving shippers from around the world.



SERVICES OFFERED

- Cargo handling
- Transloading
- Rail Car and Barge Loading/unloading
- Intermodal
- Warehousing
- Inside and outdoor storage
- Drayage

EQUIPMENT

- 275-Ton Crawler Crane
- Clamshell and yard buckets
- Skid-steer front end loaders and bulldozers
- Forklifts (5,000 to 66,000 lbs capacity)
- Yard trucks and trailers/mafris to 80 mts capacity

TYPES OF CARGO

- Project Cargo
- Wind
- Bulk
- Break-bulk

INLAND CONNECTIONS

- Direct access to Highway LA 46 (St. Claude Avenue), south of US Interstate 10
- On dock rail access serviced by Norfolk Southern Railroad

GENERAL MANAGER

Eric Alber
(504) 208-9051 Ext 2501
ealber@gulfstreammarine.com

LOCATION

1 Alabo Street
New Orleans, LA 70117

GULF STREAM MARINE INC.

10000 Manchester St.
Houston, Texas 77012
info@gulfstreammarine.com